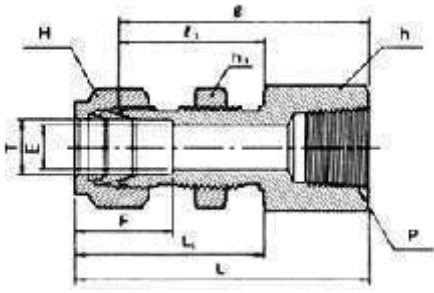


FEMALE BULKHEADER CONNECTOR



Part No.	Tube O.D. T mm	P (NPT)	E mm	h mm	h ₁ mm	H mm	F	I	I ₁	L	L ₁	Panel Hole DrillSize	Max Panel Thickness
KFI-FBC06-02	6	1/8	4.8	15.8	15.8	14	15.3	39.6	27.7	46.90	35	11.5	10.2
KFI-FBC06-04	6	1/4	4.8	19.0	16.0	14	15.3	44.4	26.2	51.80	33.6	11.5	10.2
KFI-FBC08-04	8	1/4	6.3	19.0	17.4	16	16.2	46.7	28.4	53.85	35.55	13.1	11.2
KFI-FBC12-08	12	1/2	9.5	27.0	24.0	22	22.8	55.4	31.8	66.50	41.9	19.5	12.7

KWIK FLEX INDUSTRIES

Plot No. X-18/7, Subodhi, MIDC Phase II, Dombivli (East) 421 201, INDIA
E-mail : sales@kwikflex.com ; kwikflex@vsnl.net; Telefax : +91 251 2470102