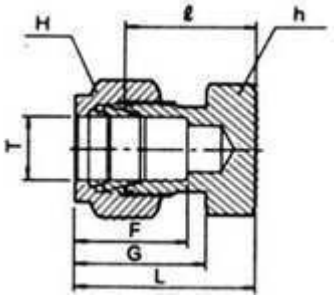


## TUBE CAP



Part No.	Tube O.D. T mm	h mm	H mm	F	G	I	L
KFI-C02	2	12	12	12.9	15.3	13.5	20.1
KFI-C03	3	12	12	12.9	15.3	13.5	20.1
KFI-C04	4	12	12	13.7	16.1	14.7	21.3
KFI-C06	6	14	14	15.3	17.7	15.7	23.1
KFI-C08	8	15	16	16.2	18.6	17.0	24.5
KFI-C10	10	18	19	17.2	19.5	19.0	26.6
KFI-C12	12	22	22	22.8	22.0	19.0	29.1
KFI-C15	15	24	25	24.4	22.0	19.8	29.9
KFI-C16	16	24	25	24.4	22.0	19.8	29.9
KFI-C18	18	27	30	24.4	22.0	21.3	31.4
KFI-C20	20	30	32	26.0	22.0	23.9	34.0
KFI-C22	22	30	32	26.0	22.0	23.9	34.0
KFI-C25	25	35	38	31.3	26.5	26.2	38.5