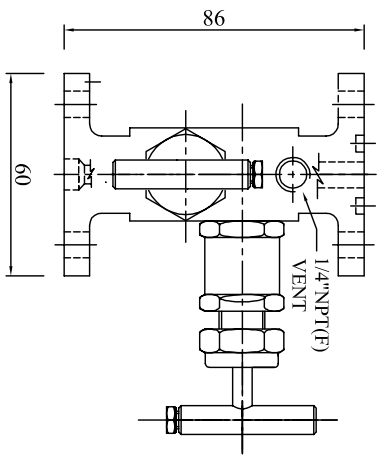


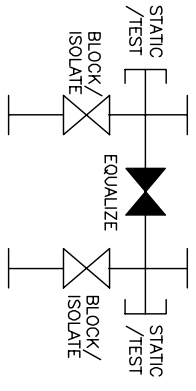
MATERIAL OF CONSTRUCTIONS			
SR. NO.	PART NO.	MATERIAL	QTY.
1	BODY	A479 SS316	1
2	GLAND BODY	A479 SS316	3
3	RETAINER	A479 SS316	3
4	SPINDLE	A479 SS316	3
5	TRIM	A56H-630	3
6	GLAND SEALS	P.T.F.E. / GRAFOIL	3
7	WASHER	A479 SS316	3
8	LOCK NUT	A479 SS316	3
9	WASHER	A479 SS316	3
10	PACKING WASHER	A479 SS316	3
11	LOCK PIN	A479 SS316	3
12	HANDLE	A479 SS304	3
13	HEX BOLT	STAINLESS STEEL	3
14	DUST CAP	P.V.C.	3

TESTING : AT 25° C ROOM TEMP.
 HYDRO TEST : PERFORMED WITH PURE WATER IN ACCORDANCE WITH MSS-SP-61. BODY TESTED AT 1.5 TIMES & SEAT LEAKAGE TESTED AT 1.1 TIMES OF THE WORKING PRESSURE.
 PNEUMATIC TEST : EACH VALVE IS TESTED WITH NITROGEN AT 1000 PSI IN ACCORDANCE WITH MSS-SP-61 FOR SEAT & PACKING LEAKAGE.
DESIGN STANDARD :
 PRESSURE & TEMPERATURE RATING ARE SELECTED FROM ANSI B16.34 STANDARD CLASS VALVES BASED ON ANSI B16-CLASS 2500 OPTIONAL SOUR GAS SERVICE CONFIRMS TO NACE STD. MR-01-75



TECHNICAL DATA					
Seat	Pr. Rat.	Temp. Rat.	GRAFOIL	CV	Orifice
METAL SEAT	6000 PSI	PTFE	-20 to 250° F	0.52 max.	4.8 mm.
	(41300 kpo)		(-29° to 121° C)		
			-20 to 600° F		
			(-29° to 315° C)		

INSTRUMENT



NOTE:-1) DIMENSIONS ARE IN MM.FOR REFERENCE ONLY,SUBJECT TO CHANGE.
 2) APPROXIMATE WEIGHT = 2.4 KGS. (5.3 LBS)

REV.	DESCRIPTION	DATE
	TITLE : 3 VALVE MANIFOLD (FLANGE TO FLANGE)	
DRN.		
CHK.	SCALE : NTS.	
APPD.	DRG. NO. : KFH/-/-	
KWIK FLEX INDUSTRIES AN ISO 9001 : 2008 COMPANY INDIA		